



THE ULTIMATE IN INJECTION MOLDING SCREW TIPS.

MALLARD[®] Z4 valves are the gold standard for solving your most demanding injection molding applications.

Utilizing a “building block” design concept, MALLARD[®] Z4 valves provide numerous advantages for any processing need, including:

- ❖ Numerous design and material selections
- ❖ Replaceable wear components
- ❖ Tough, reusable stainless steel retainer
- ❖ Self-cleaning full-flow design
- ❖ Availability for all injection molding machine makes & models

All valve designs allow use of the same retainer and rear seat, and incorporate a replaceable front seat and check ring concept. That saves you money and allows for easy customization of your valve for any need. The MALLARD[®] Z4 line of check ring valves provides the latest technology for reliable performance.



MALLARD® Z4 Valves

STANDARD Z4 SLIDING RING VALVES

The standard MALLARD® Z4 wear components are made of CPM M4 high hard, abrasion resistant, high-speed steel and have a tough reusable heat-treated 17-4 stainless steel retainer for maximum toughness & corrosion resistance.

CARBIDE-FACED Z4 VALVES

For extreme processing conditions, we offer MALLARD® Z4 valves that are manufactured utilizing carbide-faced components. These tough Z4 valves carry the industry's only *Two-Year Wear-Through Guarantee* on the carbide-faced contact surfaces of the front seat and check ring.

STAINLESS STEEL Z4 VALVES

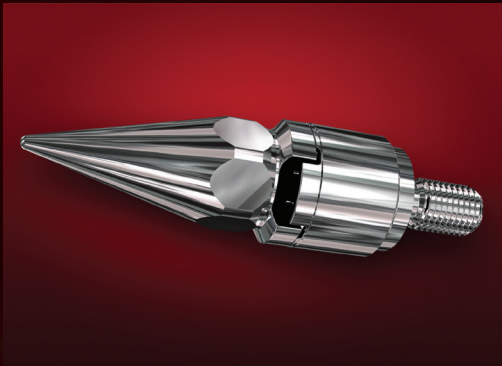
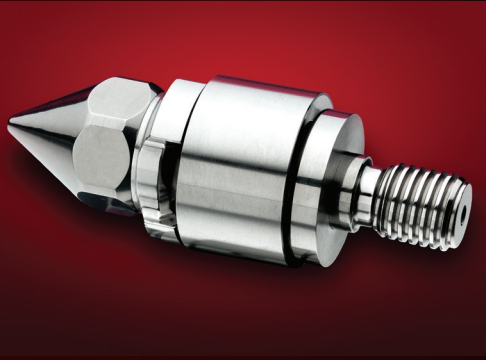
MALLARD® Z4 valves can be manufactured from corrosion and wear resistant CPM S90V (420V) or PM 20CV tool steel for extra protection when processing PVC or fire retardant-based resins such as the Halogen Free (HFFR's) materials commonly processed today. For clear polycarbonate (PC) applications, we recommend either Uddeholm's Elmax PM stainless tool steel or Latrobe's PM 20CV stainless tool steel.

SPINNER™ Z4 VALVES

The MALLARD® Spinner™ valve is a direct replacement for a standard ball check valve, and features a 4-piece interlocking design. Perfect for applications using non-filled resins, fast injection cycles & high speed screw rotation. For optimum flexibility, all Spinner parts are interchangeable with MALLARD® Z4 standard & carbide-faced valves.

ZPRINGLOK® VALVES

The MALLARD® Zpringlok® valve combines the benefits of positive check ring shut-off with the quality of the Z4 Spinner™ interlocking valve. The design features a stainless steel spring located in the check ring and does not require screw movement to close the valve. Recommended for non-filled, low viscosity molding environments where shot consistency with conventional slider or locking-ring valves is a concern. The Zpringlok® valve is used in all of our LSR Plug-N-Play packages.



MANUFACTURER OF  MALLARD® PRODUCTS

Performance Guaranteed to Customer's Satisfaction

4704 WISELAND AVENUE S.E. • CANTON, OHIO 44707 • USA
Phone: 1-330-484-4413 • Fax: 1-330-484-0267
E-mail: sales@zeigerindustries.com • www.zeigerindustries.com

